

State of Wyoming Corner Record

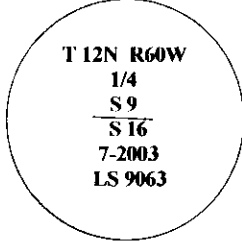
(In compliance with the CORNER PERPETUATION AND FILING ACT, Wyoming Statutes, 1997, Section 33-29-140, et seq., and the Rules and Regulations of the Board of Registration for Professional Engineers and Professional Land Surveyors)

Reverse side of this form may be used if more space is needed.

Record of original survey and citation of source of historical information (if corner is lost or obliterated). Description of corner monumentation evidence found and/or monument and accessories established to perpetuate the location of this corner. Sketch of relative location of monument, accessories, and reference points with course and distance to adjacent corner(s) (if determined in this survey). Method and rationale for reestablishment of lost or obliterated corner.

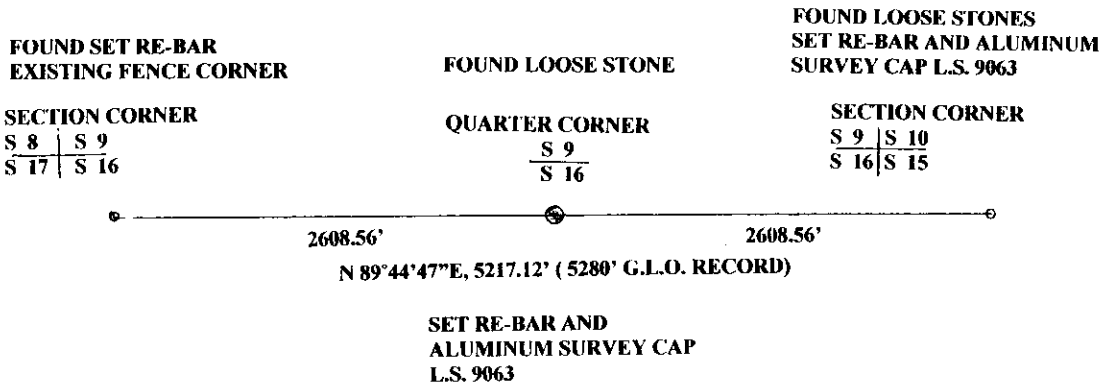
FOUND: I found a loose stone on game trail at the search location for the South Quarter Corner Of Section 9. The stone substantially fits the G.L.O. record dimensions for the original stone. The stone is very close to the South Section line between the Southwest Corner and Southeast Corner of Section 9.

SET: An aluminum survey cap, marked L.S. 9063, and marked appropriately for the Quarter Corner Straight line and equidistant between the Southwest and Southeast Corners of Section 9. Placed the Found stone and a few smaller stones at this position. No other stones are visible anywhere in the Area.



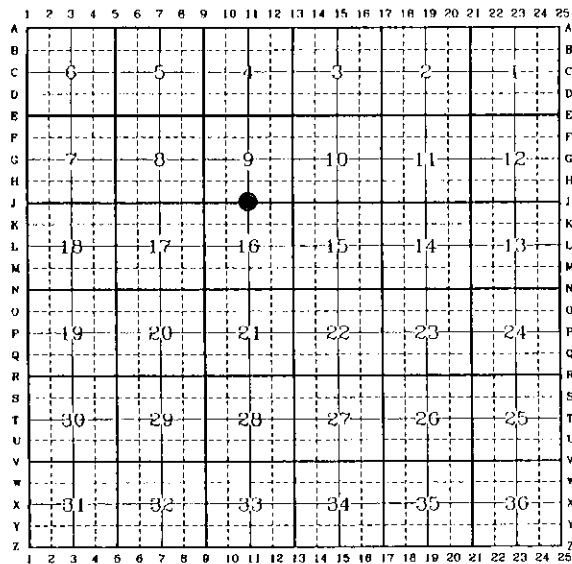
MONUMENT DESCRIPTION

BASIS OF BEARING- G.L.O. RECORD BEARING NORTH LINE OF SECTION 9



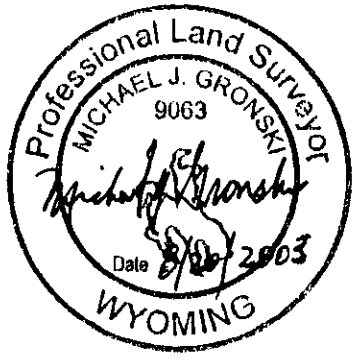
Date of Field Work: 7-2003 Office Reference: _____

CROSS INDEX DIAGRAM



Land Surveyor / Firm / Address
MICHAEL J. GRONSKI
G&S SURVEYS
5211 OGDEN ROAD
CHEYENNE, WYOMING 82009
 Telephone: (307) 637-6127

This corner record was prepared by me or under my direction and supervision.
SEAL & SIGNATURE



Corner Name: SOUTH QUARTER CORNER Section: 9 T 12N. R 60W. 6TH P.M. Cross-Index No.: J-11
 SBRPEPLS/PLSW: March 1994; PLSW January 1998

